

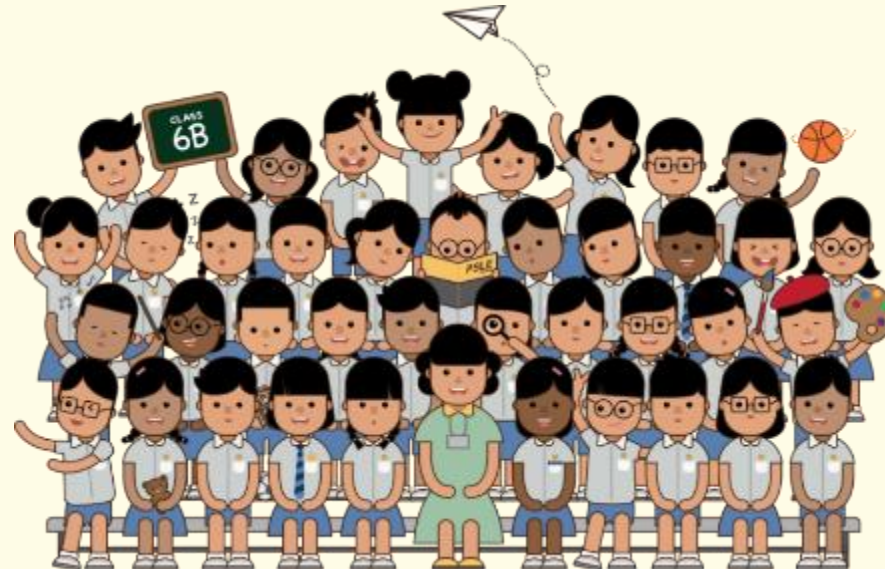


Supporting Your Child @P6

PSLE SCORING AND S1 POSTING SYSTEMS

SUPPORTING STUDENTS AND PARENTS IN MAKING INFORMED SCHOOL CHOICES FOR PSLE

2023 Briefing Deck to P5 and P6 Parents



OVERVIEW

RECAP

- How the PSLE Scoring System Works
- How the S1 Posting System Works

SUPPORTING STUDENTS AND THEIR PARENTS IN MAKING INFORMED SCHOOL CHOICES

- Understanding the PSLE Score Ranges
- School Choice Journey



WHAT IS THE INTENT OF THE PSLE?



A useful checkpoint at the end of primary school

A fair way to determine secondary school posting



Over the years, we have been changing the education system to help our students discover and develop their strengths and interests, while moving away from an over-emphasis on academic results. Our PSLE Scoring changes reduce an over-emphasis on academic results by:

1

Reducing fine differentiation of students' examination results at a young age.

2

Recognising a student's level of achievement, regardless of how his/her peers have done.

3

Encouraging families to choose secondary schools holistically based on students' strengths, interests and abilities.

HOW THE PSLE SCORING SYSTEM WORKS



FROM T-SCORE TO SCORING BANDS

a) Reduces fine differentiation of students' examination results at a young age

- Students with similar scores in each subject are grouped into wider scoring bands measured in 8 ALs.

b) Reflects a student's individual level of achievement

- Students' ALs for each subject reflect their level of achievement, rather than how they have performed relative to their peers.

AL	RAW MARK RANGE
1	≥ 90
2	85 – 89
3	80 – 84
4	75 – 79
5	65 – 74
6	45 – 64
7	20 – 44
8	< 20

GRADING OF FOUNDATION SUBJECT GRADES

- Foundation subject grades are graded in scoring bands from **AL A to C**.
- To derive a student's overall PSLE Score for S1 Posting, AL A to AL C for Foundation level subjects are **mapped to AL 6 to AL 8 of Standard level subjects respectively**.
- Similar to the PSLE T-score system, this mapping is based on the learning and assessment load of the subjects, and informs students of how ready they are for the curriculum in secondary school.

FOUNDATION LEVEL AL	FOUNDATION RAW MARK RANGE	EQUIVALENT STANDARD LEVEL AL
A	75 – 100	6
B	30 – 74	7
C	< 30	8

4 SUBJECT ALs WILL BE ADDED TO FORM THE OVERALL PSLE SCORE

- The PSLE Score can range from 4 to 32, with 4 being the best.
- Students are placed in secondary school courses based on their PSLE Score – Posting Groups G1, G2, G3 mapped from current N(T), N(A), Exp

ENGLISH LANGUAGE	AL 3
MOTHER TONGUE LANGUAGE	AL 2
MATHEMATICS	AL 1
SCIENCE	AL 2
PSLE SCORE: 8	

PSLE SCORE	POSTING GROUPS	SUBJECT LEVEL FOR MOST SUBJECTS
4 – 20	3	G3
21 – 22	2 or 3	G2 or G3
23 – 24	2	G2
25	1 or 2	G1 or G2
26 to 30	1	G1

NEW

ELIGIBILITY CRITERIA FOR HIGHER MOTHER TONGUE LANGUAGE (HMTL)

ELIGIBILITY CRITERIA FOR HMTL

- (i) An overall PSLE Score of 8 or better**
- or**
- (ii) An overall PSLE Score of 9 to 14 (inclusive); and attain**
 - AL 1 / AL 2 in MTL or**
 - Distinction / Merit in HMTL**

- The eligibility criteria for taking HMTL takes reference from past criteria.
- It ensures students can cope with the higher academic load.
- Secondary schools continue to have the flexibility to offer HMTL to students who do not meet the criteria if they:
 - have high ability and interest in MTL, and
 - are able to cope with the learning load required.

ELIGIBILITY CRITERIA FOR MOTHER TONGUE LANGUAGE (MTL) 'B' IN SECONDARY SCHOOLS

- The MTL 'B' curriculum is designed to help students in the G3 and G2 courses who face exceptional difficulty coping with MTL.

ELIGIBILITY CRITERIA FOR MTL 'B' (FOR STUDENTS OFFERED THE G2, G3 COURSES)

AL 7 or 8 in Standard MTL
or
AL B or C in Foundation MTL

- Schools have discretion to offer MTL 'B' to students who face exceptional difficulty with MTL but do not meet the eligibility criteria at Secondary 1 based on PSLE results.
- As students progress in secondary school, they may also take up MTL 'B' if they are assessed to be suitable by their schools.

SUBJECT-BASED BANDING (SECONDARY)

[SBB (SEC)] ELIGIBILITY CRITERIA

- SBB (Sec) provides students posted to the G1, G2 courses with **greater flexibility** to take various subjects at a more demanding level based on their subject-specific strengths.
- Under the new PSLE Scoring System, the SBB (Sec) eligibility criteria is as follows:

FOR STUDENTS POSTED TO THE G2, G1 COURSE	
PSLE SUBJECT GRADE	OPTION TO TAKE SUBJECT AT
AL 5 or better in a Standard level subject	G3
AL 6 or better in a Standard level subject <u>OR</u> AL A in a Foundation level subject	G2

- As students progress in secondary school, they continue to have opportunities at various junctures to take subjects at more demanding levels based on their performance in school.
- Students posted to the G3 course will take all their subjects at the G3 level

SUBJECT-BASED BANDING (SECONDARY) [SBB (SEC)] ELIGIBILITY CRITERIA

**English
G2**

**Mother Tongue
G2**

**Math
G1**

**Science
G2**

EXAMPLE:

ENGLISH LANGUAGE AL6

MOTHER TONGUE AL6
LANGUAGE

MATHEMATICS AL5

SCIENCE AL6

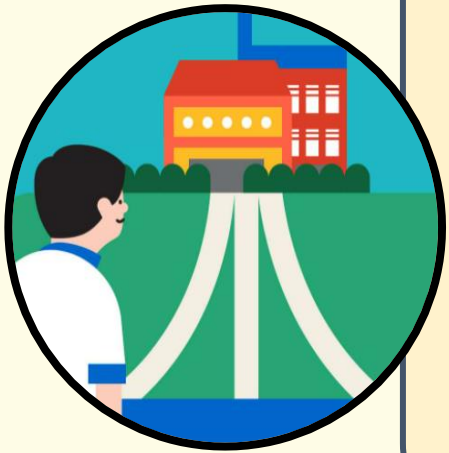
PSLE SCORE: 23

Offered G2 course



FULL SUBJECT-BASED BANDING (FULL SBB)

- MOE is expanding Subject-Based Banding to Full SBB in secondary schools.
- This is in line with the changes to PSLE Scoring to recognise each student's own level of achievement and encourage them to choose secondary schools that fit their strengths and interests.
- Full SBB aims to further nurture the joy of learning and develop multiple pathways to cater to the different student profiles. Through Full SBB, we want students to:



- have greater ownership of their education, and learn each subject at the level that best caters to their overall strengths, interests and learning needs, and
- have more opportunities to interact with friends of different strengths and interests.
- not be held back by negative self-concepts and labelling.
- have increased access to post-sec pathways, while having strong fundamentals in their subjects so that they are able to thrive in the pathway they choose.

FULL SUBJECT-BASED BANDING (FULL SBB)

- The following are changes that students will experience from Full SBB:

- Removal of Express, N(A) and N(T) courses: G1, G2, G3 Subjects
- Mixed form classes
- Common Curriculum subjects
- Offering subjects at a more demanding level, including Humanities subjects
- Common National Examinations in 2027
- Post-secondary Admissions (details will be provided later)



FULL SUBJECT-BASED BANDING (FULL SBB) TIMELINE

Link to PSLE-FSBB Microsite



<https://go.gov.sg/pslefsbb>



2020

Full SBB pilot commenced in 28 secondary schools. Feedback from pilot schools has been positive.



2022

Full SBB will continue to be rolled out to more schools in phases.



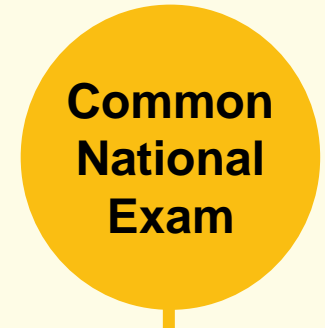
2023



2024

From 2024,

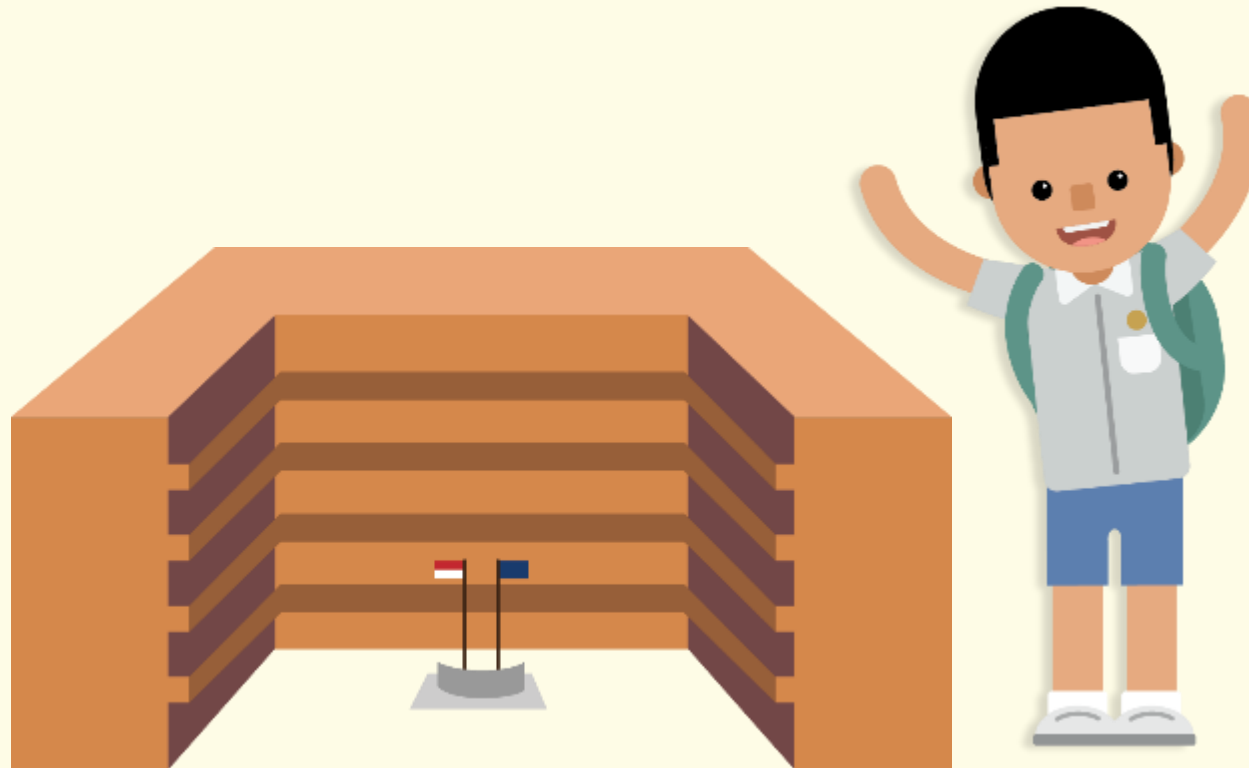
- There will no longer be Express, N(A) and N(T) courses.
- Students will be able to study subjects at different levels that suit their interests, strengths and learning needs.



2027

From 2027, students will sit for the common national examination and receive a new national certification with subjects at different levels.

HOW THE S1 POSTING SYSTEM WORKS



CHOICE ORDER OF SCHOOLS MATTERS MORE

- Students continue to have **six choices** in selecting their secondary schools.
- Similar to past years, students continue to be posted to a secondary school based on **academic merit, i.e., PSLE Score**, and their **school choice order**.
- If there are two or more students with the same PSLE Score vying for the last remaining place(s) in a school, the following tie-breakers will be used in the following order:
 1. **CITIZENSHIP**
 2. **CHOICE ORDER OF SCHOOLS (New tie-breaker from 2021 onwards)**
 3. **COMPUTERISED BALLOTING**
- The new tie-breaker based on school choice order recognises the different considerations that families have in making school choices.








Tie-breakers

in the new S1 Posting System

Tie-breakers are used only if there are two or more students with the same PSLE Score vying for the last available place(s) in a school.

Here's a simplified example.

5 students are vying for the last places in the schools of their choice.

Jane Singapore Citizen 16 pts	SCHOOL CHOICES: 1) Sch A 2) Sch ... 3) Sch ... 4) Sch ...	
Bryan Singapore Citizen 20 pts	SCHOOL CHOICES: 1) Sch B 2) Sch ... 3) Sch ... 4) Sch ...	
Mary Singapore Citizen 20 pts	SCHOOL CHOICES: 1) Sch A 2) Sch B 3) Sch C 4) Sch ...	
Alan Permanent Resident 20 pts	SCHOOL CHOICES: 1) Sch A 2) Sch B 3) Sch D 4) Sch ...	
Rina Permanent Resident 20 pts	SCHOOL CHOICES: 1) Sch A 2) Sch B 3) Sch D 4) Sch E	



Students with better scores will be posted first



Tie-breaker #1: Citizenship



Tie-breaker #2: Choice order of schools



Tie-breaker #3: Computerised balloting

Jane has a better PSLE score. She will be posted first, to **School A**.



Bryan, Mary, Alan and Rina have the same score.

As Jane has taken the last available place in School A, Bryan, Mary, Alan and Rina will vie for the last available place in their next choice, **School B**.

Bryan and Mary are Singapore Citizens. They will have priority to enter **School B**.



Alan and Rina will be tie-broken out as they are Permanent Residents. They will be considered for their next choice, **School D**.

Because Bryan ranked School B higher than Mary, he will be posted to **School B**.



Since Bryan has taken the last place in School B, Mary will be posted to **School C**.



Alan and Rina have both ranked School D as their third choice. They will go through computerised balloting to vie for the last remaining place in **School D**.

Through computerised balloting, Alan is posted to **School D**.



Since Alan has taken the last place in School D, Rina will be posted to her fourth choice, **School E**.

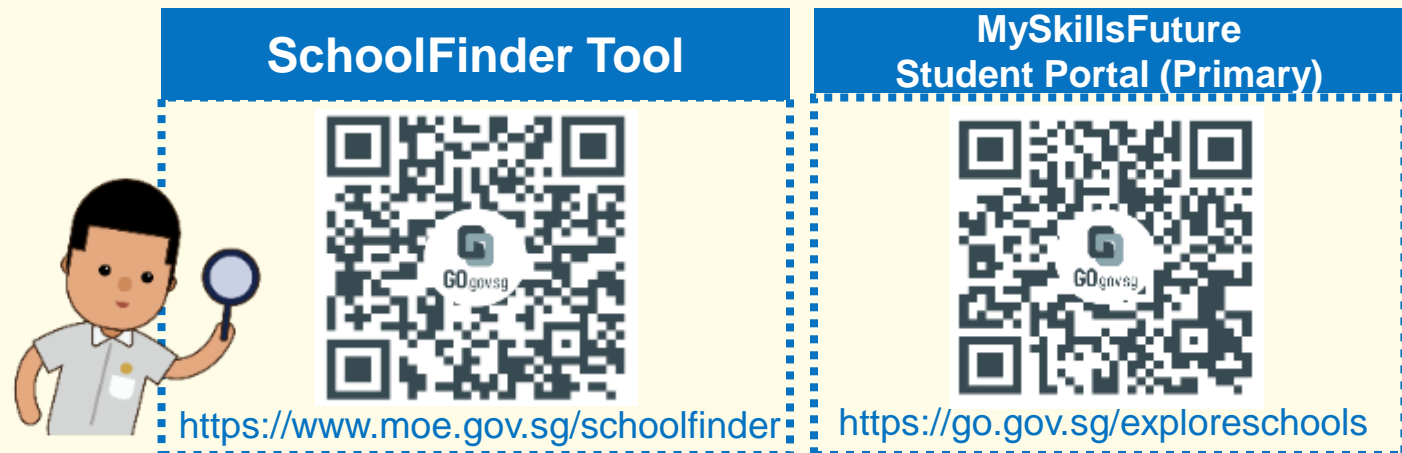


PSLE SCORE RANGES FOR INDIVIDUAL SECONDARY SCHOOLS



PSLE SCORE RANGES FOR ALL SECONDARY SCHOOLS

- Use the PSLE Score ranges as a reference alongside other important factors, such as the school's distinctive programmes, Co-Curricular Activities (CCA), culture, ethos, and proximity to home when shortlisting school choices that would best fit a student's educational needs.
- The 2022 PSLE Score ranges for individual secondary schools will be available for your reference on <https://moe.gov.sg/schoolfinder>. They reflect the PSLE scores of the student posted into these schools at the 2022 S1 Posting Exercise.
- A school's PSLE Score range (including Cut-Off-Point) for a particular year is not pre-determined before the posting, and may vary from year to year, depending on the cohort's PSLE results and their school choices in that year's S1 Posting Exercise.



PSLE SCORE RANGES FOR INDIVIDUAL SECONDARY SCHOOLS

The PSLE Score range refers to the PSLE Score of the first and last student admitted to a particular school in the previous year via the S1 Posting Exercise. This shows the range of student profiles who enter each school.

Example

XX Secondary School
PSLE Score range of 2021

Posting Group 3	15	20
Posting Group 2	21	24
Posting Group 1	25	28

PSLE Score of the first student
posted into the school in the
respective courses

PSLE Score of the last student posted into the
school in the respective courses [i.e., the school's
Cut-Off Point (COP)]

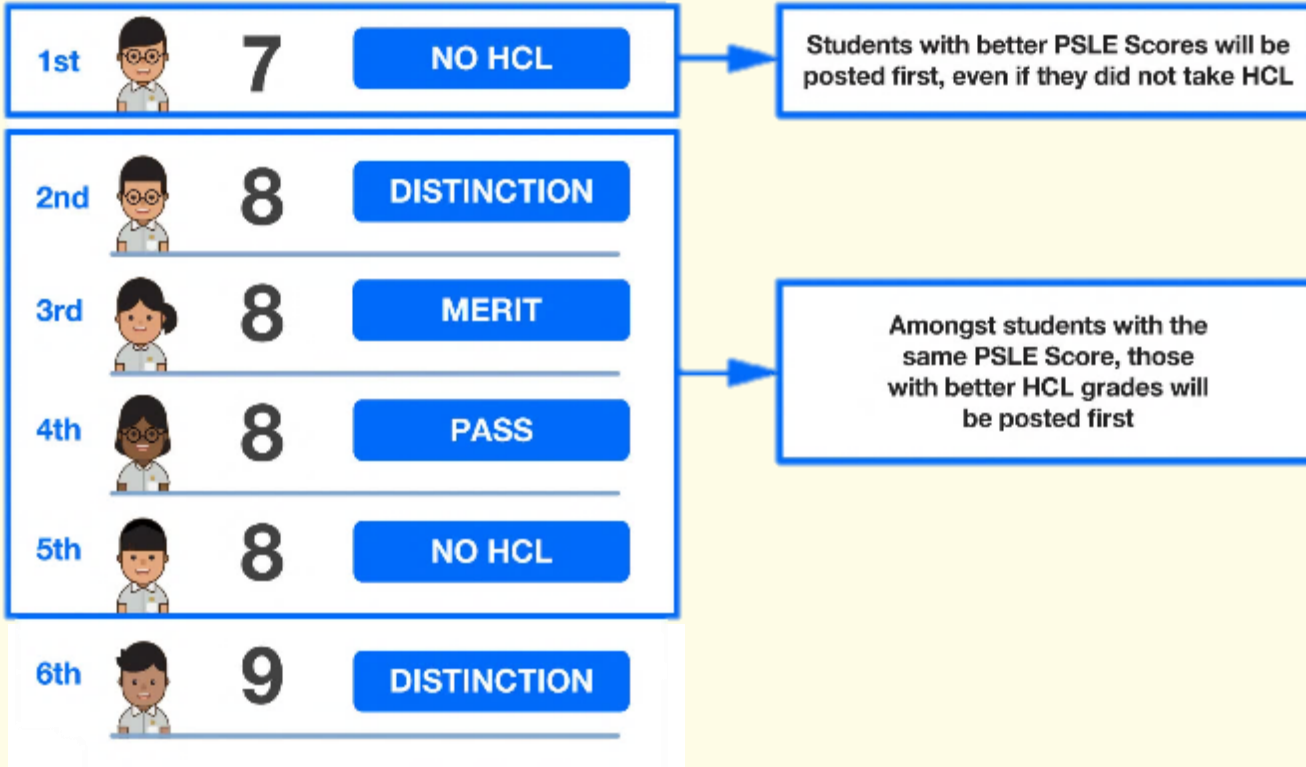
USE OF HIGHER CHINESE LANGUAGE (HCL) FOR ADMISSION INTO SPECIAL ASSISTANCE PLAN (SAP) SCHOOLS



HCL POSTING ADVANTAGE FOR ENTRY TO SAP SCHOOLS WILL CONTINUE

Students who obtained a Distinction/Merit/Pass for HCL at the PSLE and an overall PSLE Score of 14 or better will receive a posting advantage when applying to SAP schools.

Students will be considered for admission to SAP schools in the following order:



- Students' HCL results are denoted as 'D' (Distinction), 'M' (Merit) or 'P' (Pass).
- Students who obtain (i) a Distinction / Merit / Pass in HCL and (ii) a PSLE Score of 14 or better are eligible for posting advantage to SAP schools.
- Students are ranked taking into account their performance in HCL.
- This posting advantage applies before the tie-breakers for S1 Posting.

EXAMPLE OF AN SAP SCHOOL's PSLE SCORE RANGE

While students need not take HCL to enter SAP schools, students who pass HCL receive a posting advantage for admission. To reflect this, the PSLE Score ranges of SAP schools include the HCL grades of the first and last student admitted in the previous year via S1 Posting.

Example

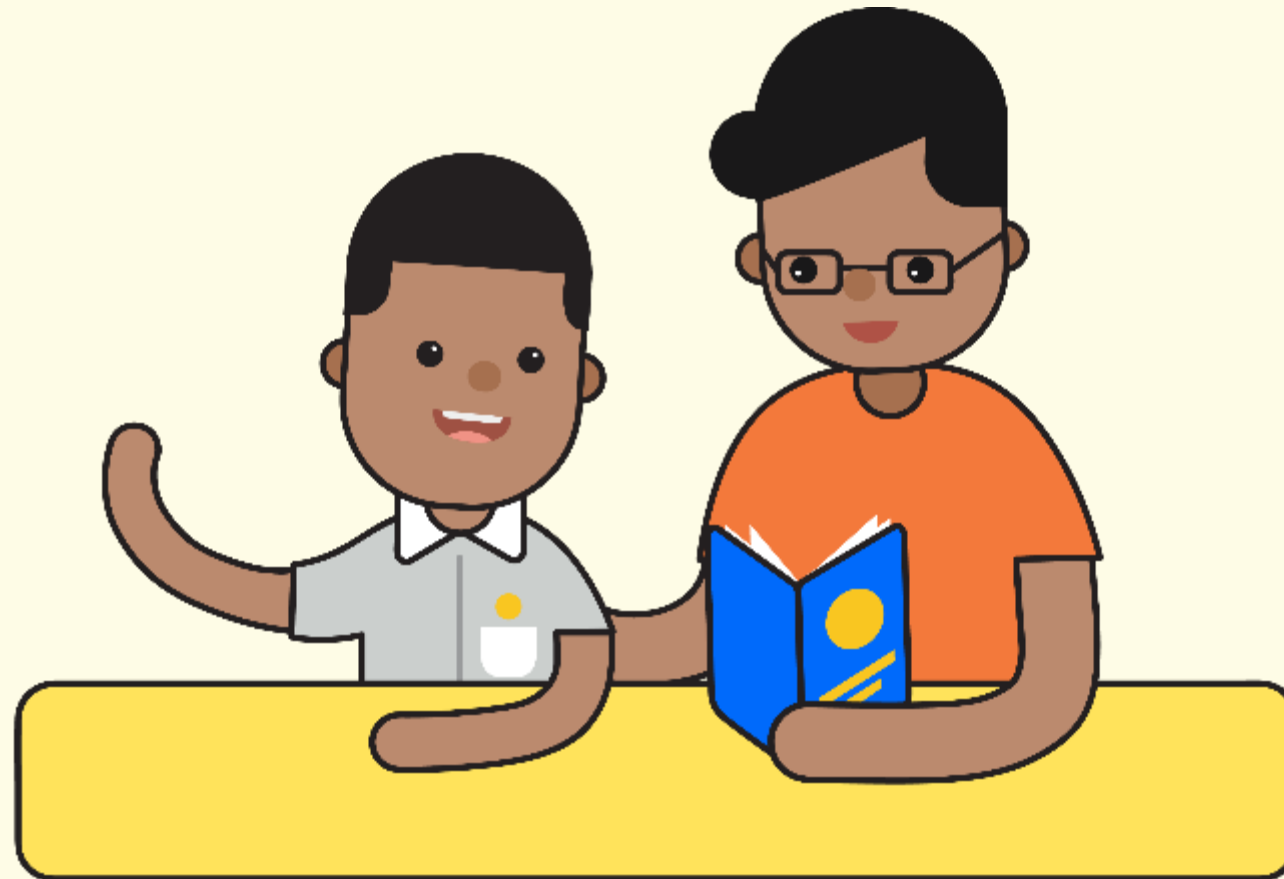
XX Secondary School
PSLE Score range of 2021

Posting Group 3	5 (D) – 12 (P)

PSLE Score and HCL grade of the first student posted into the school in the Posting Group 3

PSLE Score and HCL grade of the last student posted into the school in the Posting Group 3 [i.e. the school's Cut-Off Point (COP)]

CHOOSING SUITABLE SECONDARY SCHOOLS WITH YOUR CHILD



SCHOOL CHOICE JOURNEY

- The PSLE Score ranges are a **useful reference point** for parents and students to consider secondary schools.
- Use this information, together with other **important factors** such as the secondary schools' distinctive programmes, CCAs, ethos and cultures, to shortlist schools that would best fit the educational needs of the student.
- If your child has specific talents and strengths beyond the PSLE (e.g. areas such as sports, performing arts and leadership), consider the **Direct School Admission-Secondary (DSA-Sec)** as an alternative admission pathway to access secondary schools that have talent development programmes in these areas.



Questions/Anxieties on DSA

- Is my child good enough for DSA
- Must he go through external training for Interview for DSA
- Must he build up a portfolio or prove with certification
- Will there be so much work involved in applying for DSA
- Using PSLE score to enter a secondary school is the Best Way

O LEVELS OR INTEGRATED PROGRAMME?

O LEVELS	INTEGRATED PROGRAMME
<ul style="list-style-type: none">• 4 years of study• Sit for the GCE O-Level examination• Subject Based Banding - flexibility to take subjects at a more demanding level in their learning and can better develop their strengths and interests.	<ul style="list-style-type: none">• 6 years of study• Sit for A Level, IB Diploma or NUS High School Diploma• Students on O Level track in an IP school can transfer to IP at Sec 3 (if they perform well)• Engaged in broader range of learning experiences in both academic and non-academic areas

IP SCHOOLS OFFERING A LEVELS

SCHOOL	JC PARTNER	QUALIFICATION ATTAINED
CATHOLIC HIGH SCHOOL* CHIJ ST. NICHOLAS GIRLS' SCHOOL* SINGAPORE CHINESE GIRLS' SCHOOL*	EUNOIA JUNIOR COLLEGE	A LEVEL
HWA CHONG INSTITUTION (SECONDARY) NANYANG GIRLS' HIGH SCHOOL	HWA CHONG INSTITUTION	
RAFFLES GIRLS' SCHOOL (SECONDARY) RAFFLES INSTITUTION (SECONDARY)	RAFFLES INSTITUTION	
CEDAR GIRLS' SECONDARY SCHOOL* VICTORIA SCHOOL*	VICTORIA JUNIOR COLLEGE	
DUNMAN HIGH SCHOOL		
NATIONAL JUNIOR COLLEGE		
RIVER VALLEY HIGH SCHOOL		
TEMASEK JUNIOR COLLEGE		

*Schools offering Dual-track O Levels and IP

IP SCHOOLS INTERNATIONAL BACCALAUREATE & NUS HIGH SCHOOL DIPLOMA

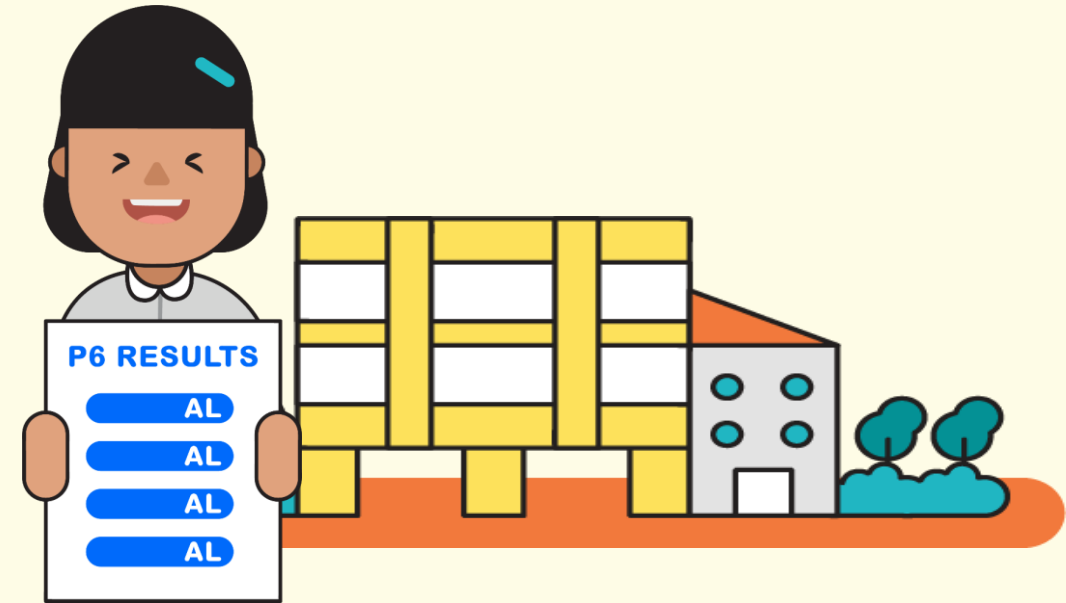
SCHOOL	JC PARTNER	QUALIFICATION ATTAINED
METHODIST GIRLS' SCHOOL* ANGLO CHINESE SCHOOL (INDEPENDENT)*	ANGLO CHINESE SCHOOL (INDEPENDENT)*	INTERNATIONAL BACCALAUREATE
ST JOSEPH'S INSTITUTION*		
SINGAPORE SPORTS SCHOOL^		
SCHOOL OF THE ARTS ^		
NATIONAL UNIVERSITY OF SINGAPORE (NUS) HIGH SCHOOL		NUS HIGH SCHOOL DIPLOMA

^Specialised Independent Schools

PREPARING FOR THE S1 POSTING EXERCISE

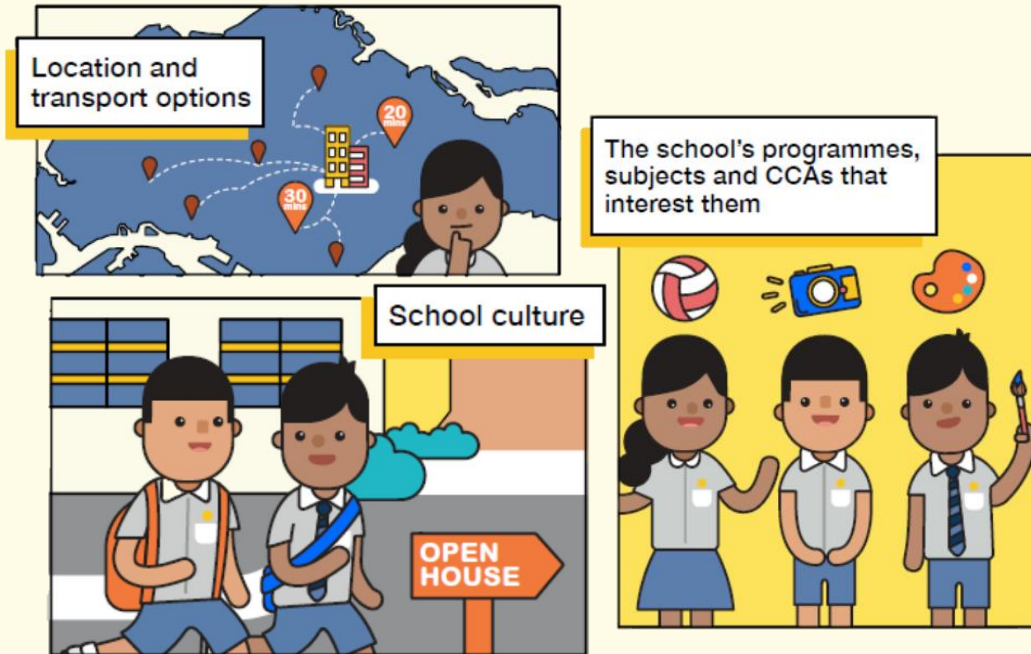


Use all 6 options with a range of Cut-off Points as this will increase your child's chances of being posted to a school of their choice.

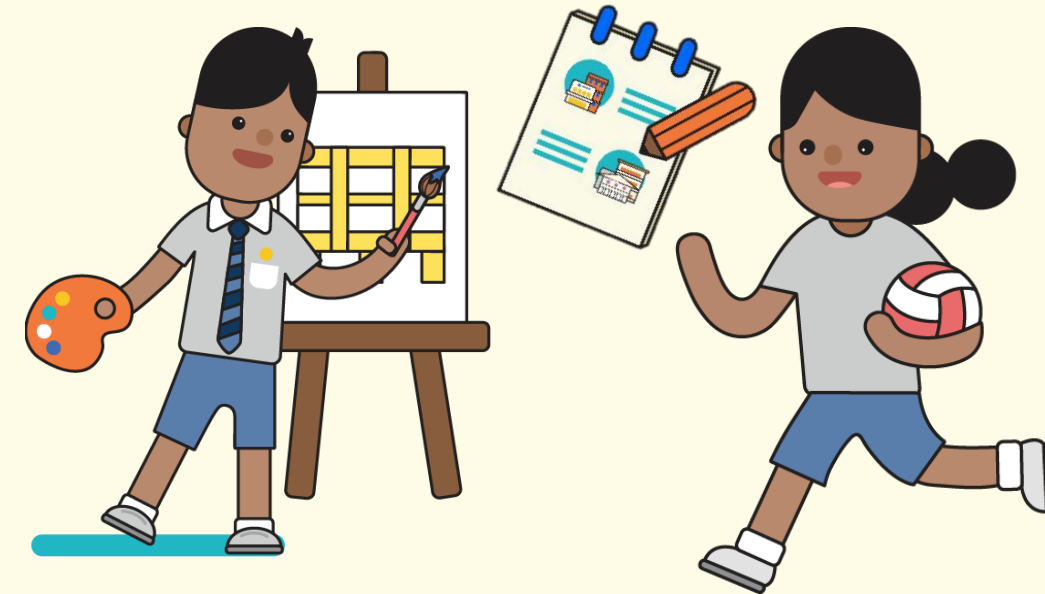


Take reference from schools' PSLE Score ranges, which serves as a guide for you and your child to shortlist school choices. Consider at least 2-3 schools where your child's PSLE Score is better than the school's Cut-off Point.

PREPARING FOR THE S1 POSTING EXERCISE

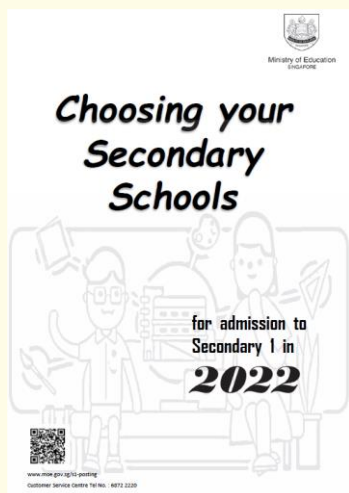
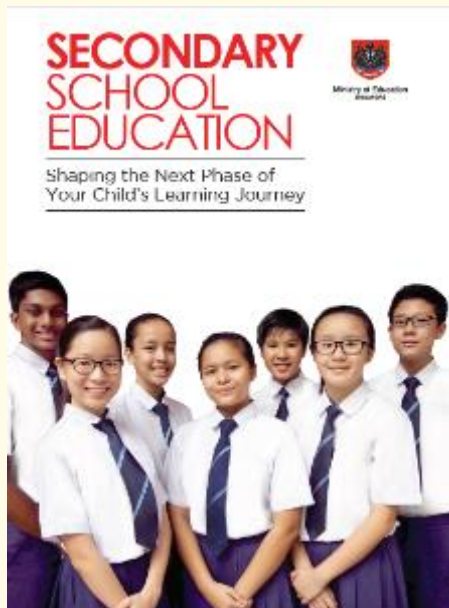


Shortlist schools that offer programmes that cater to the your child's strengths and interests, and that provide suitable learning environments.



Rank your child's preferred school higher in the school choice order. This will increase your child's chances of being posted to that school, if tie-breakers are required.

PREPARING FOR THE S1 POSTING EXERCISE



**SCHOOL
FINDER**
*My*SKILLS*future*

- Release of **PSLE** results
- Submission of **Secondary 1 Option Form**



- Release of **S1 Posting** results



OCTOBER

NOVEMBER

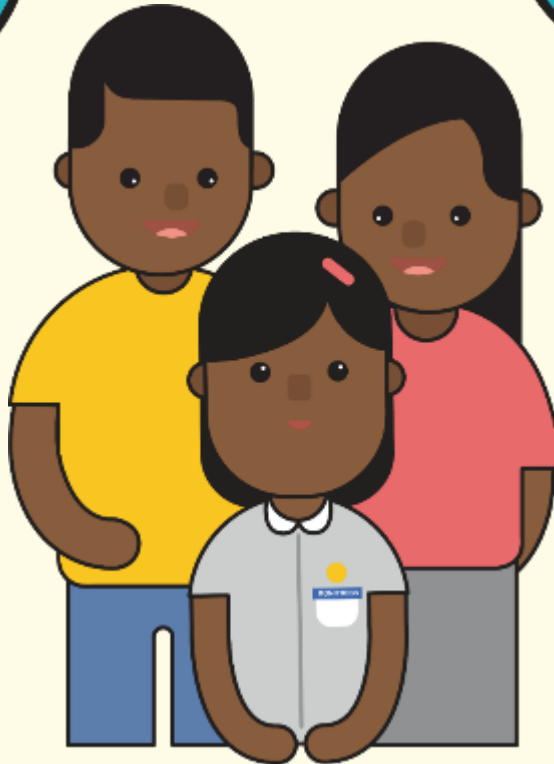
DECEMBER

TIPS FOR PARENTS!

Be open and flexible when discussing your child's preferences, needs and choices.

Manage your own expectations and do not project these expectations onto your child.

Have regular conversations with your child to understand more about his/her interests and aspirations.



Affirm your child and offer support when he/she shares his/her plans with you.

FIND OUT MORE ON THE PSLE-FSBB MICROSITE!



<https://go.gov.sg/pslefsbb>



OTHER RESOURCES

1

SchoolFinder Tool

SCHOOL
FINDER



<https://go.gov.sg/secschoolfinder>

2

“Welcome to Secondary School” video



<https://go.gov.sg/welcome-to-secondary-school>

3

Secondary School Education Booklet



<https://go.gov.sg/p/sle-sec-sch-brochure>

4

ECG Parent Guide



<https://go.gov.sg/parent-guide>

Direct School Admission for secondary schools (DSA-Sec)



Evergreen Primary School



What is DSA-Sec?

- Allows students to apply to some schools before taking the PSLE.
- Students apply based on their talent in sports, CCAs and specific academic areas.
 - Sports and games
 - Visual, literary and performing arts
 - Debate and public speaking
 - Science, mathematics and engineering
 - Languages and humanities
 - Uniformed groups
 - Leadership (for example, class leaders, CCA leaders, prefects)



Timeline of DSA (Tentative)

Jan to
May

- Explore school choices

May to
June

- Apply for schools

July to
Aug

- Attend e-interviews or e-auditions

Sept

- Selected students will receive DSA-Sec offers from schools.

Oct

- Select preferred schools (up to 3 schools)

Nov

- Receive school allocation results with PSLE results

QUESTION & ANSWER

THANK YOU

